

CARNAHAN · PROCTOR · CROSS, INC.

CONSULTING ENGINEERS · SURVEYORS · PLANNERS

6101 WEST ATLANTIC BOULEVARD, MARGATE, FLORIDA 33063
PHONE: 954-972-3959 FAX: 954-972-4178

JANUARY 2003

991010LC

JSH/JM

GROVES AT ROYAL PALM

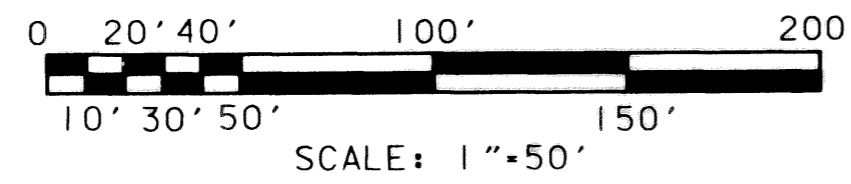
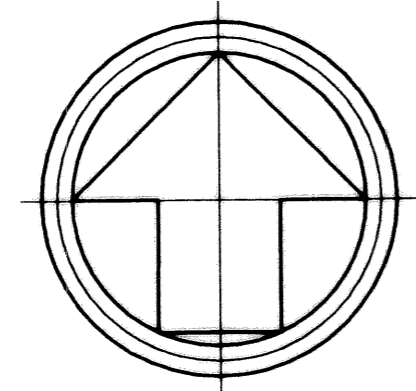
A PORTION OF SECTION 1, TOWNSHIP 44 SOUTH, RANGE 41 EAST,
VILLAGE OF ROYAL PALM BEACH, PALM BEACH COUNTY, FLORIDA

SEE SHEET 2 OF 3

160

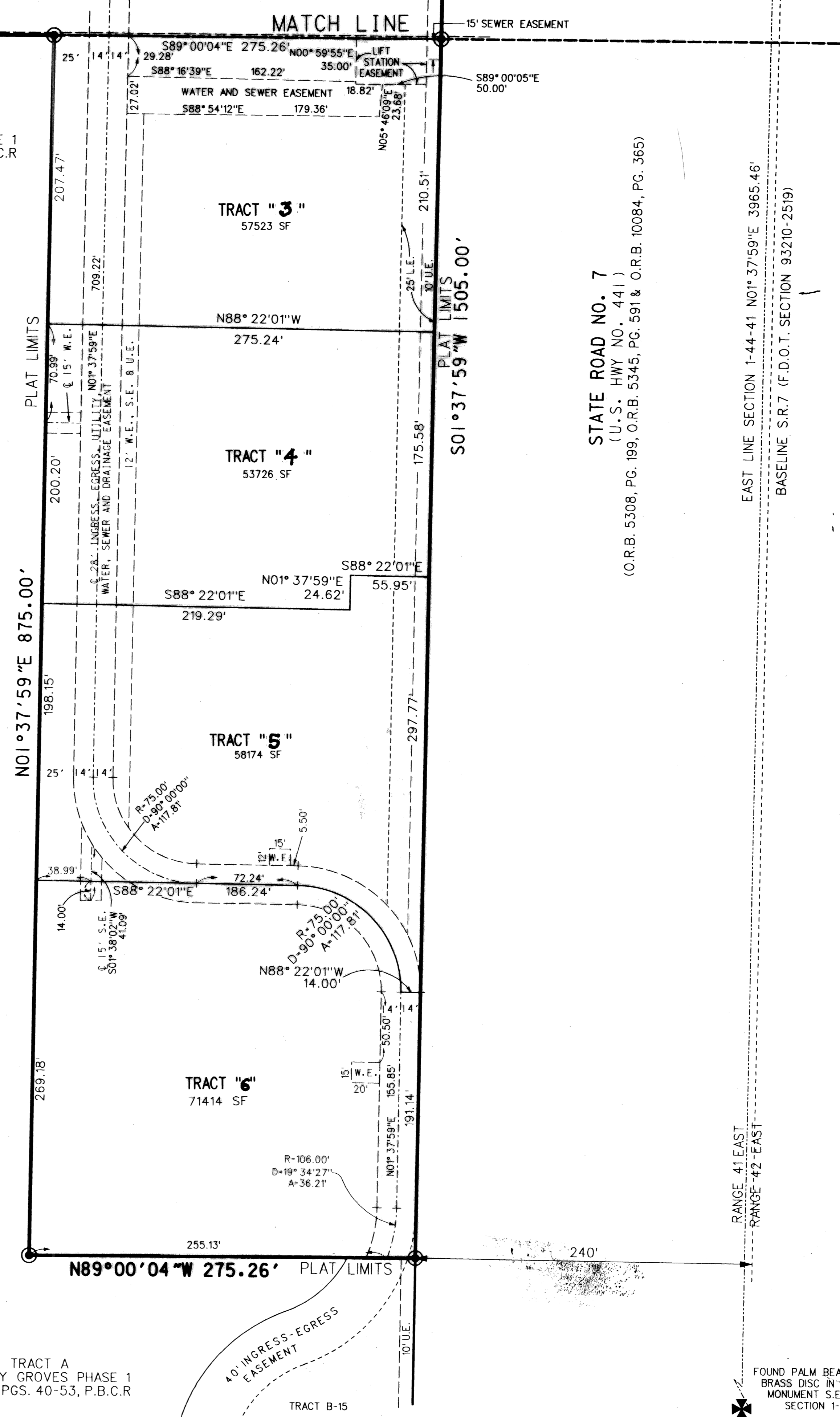
PLAT LIMITS N89°00'04"W 992.00'

TRACT A
ANTHONY GROVES PHASE 1
P.B. 93, PGS. 40-53, P.B.C.R.



LEGEND:

- SET PERMANENT REFERENCE MONUMENT (P.R.M.) *LB2936 UNLESS OTHERWISE NOTED
- ⊕ CENTERLINE
- A ARC LENGTH
- D DELTA (CENTRAL ANGLE)
- D.E. DRAINAGE EASEMENT
- L.A.E. LIMITED ACCESS EASEMENT
- L.E. LANDSCAPE EASEMENT
- L.M.A.E. LAKE MAINTENANCE ACCESS EASEMENT
- L.M.E. LAKE MAINTENANCE EASEMENT
- L.S.E. LIFT STATION EASEMENT
- L.W.D.D. LAKE WORTH DRAINAGE DISTRICT
- N.R. NON-RADIAL
- O.R.B. OFFICIAL RECORDS BOOK
- PG. PAGE
- P.B. PLAT BOOK
- P.B.C.R. PALM BEACH COUNTY RECORDS
- P.O.B. POINT OF BEGINNING
- P.O.C. POINT OF COMMENCEMENT
- P.U.D. PLANNED UNIT DEVELOPMENT
- R RADIUS
- R/W RIGHT-OF-WAY
- SF SQUARE FEET
- U.E. UTILITY EASEMENT
- CH. CHORD
- C.B. CHORD BEARING
- W.E. WATER EASEMENT
- S.E. SEWER EASEMENT



STATE ROAD NO. 7
(U.S. HWY NO. 441)
(O.R.B. 5308, PG. 199, O.R.B. 5345, PG. 591 & O.R.B. 10084, PG. 365)

EAST LINE SECTION 1-44-41 N01°37'59"E 3965.46'
BASELINE, S.R.7 (F.D.O.T. SECTION 93210-2519)

PLAT LIMITS N01°37'59"E 875.00'

PLAT LIMITS S01°37'59"W 1505.00'

PLAT LIMITS N89°00'04"W 275.26'

TRACT A
ANTHONY GROVES PHASE 1
P.B. 93, PGS. 40-53, P.B.C.R.

FOUND PALM BEACH COUNTY
BRASS DISC IN CONCRETE
MONUMENT S.E. CORNER
SECTION 1-44-41

SHEET 3 OF 3